

MURRAY COUNTY.

Section

11

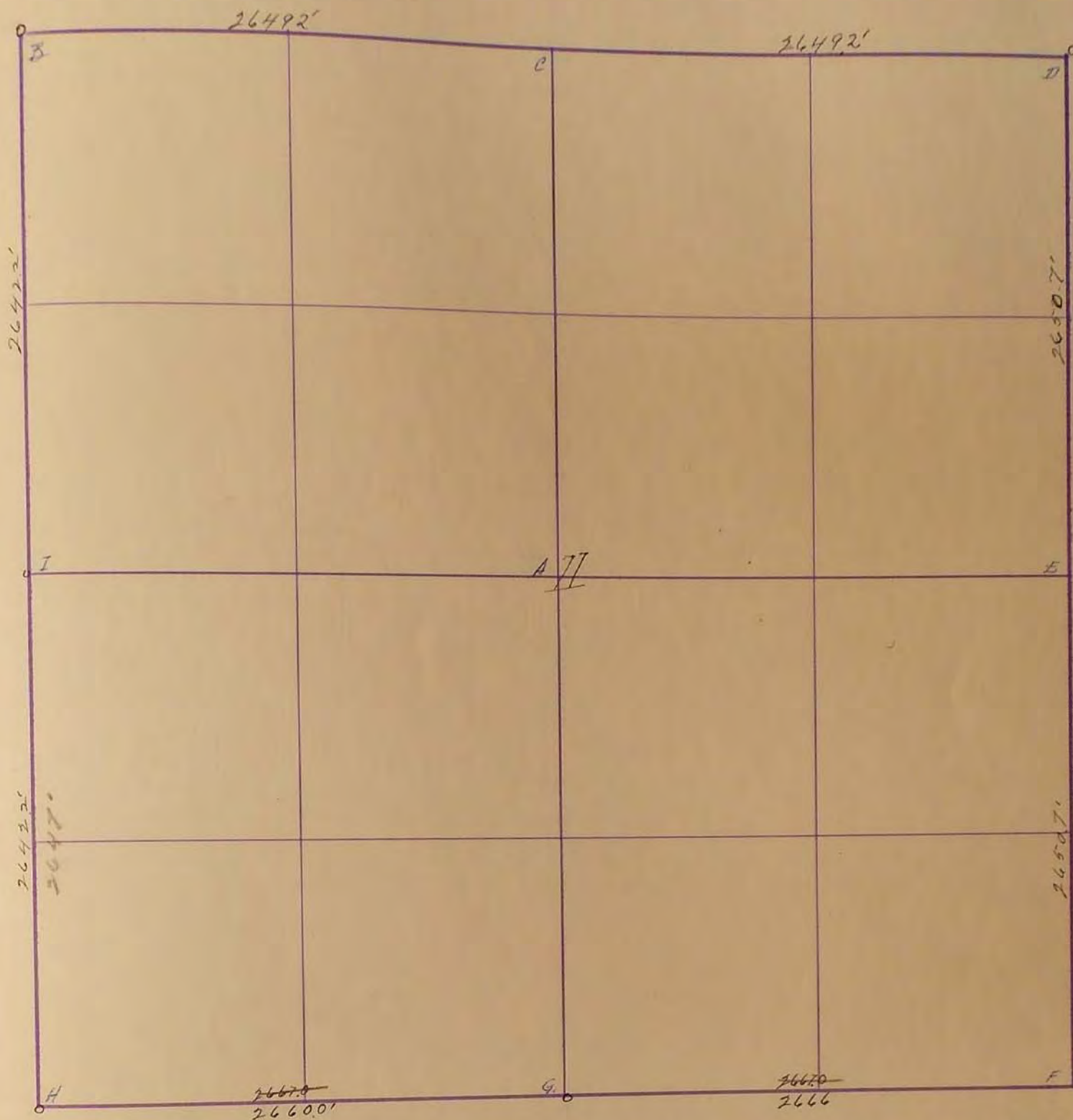
Township

108

Range

39

10798 McGill-Warner Co., Blank Book Manufacturers, St. Paul.

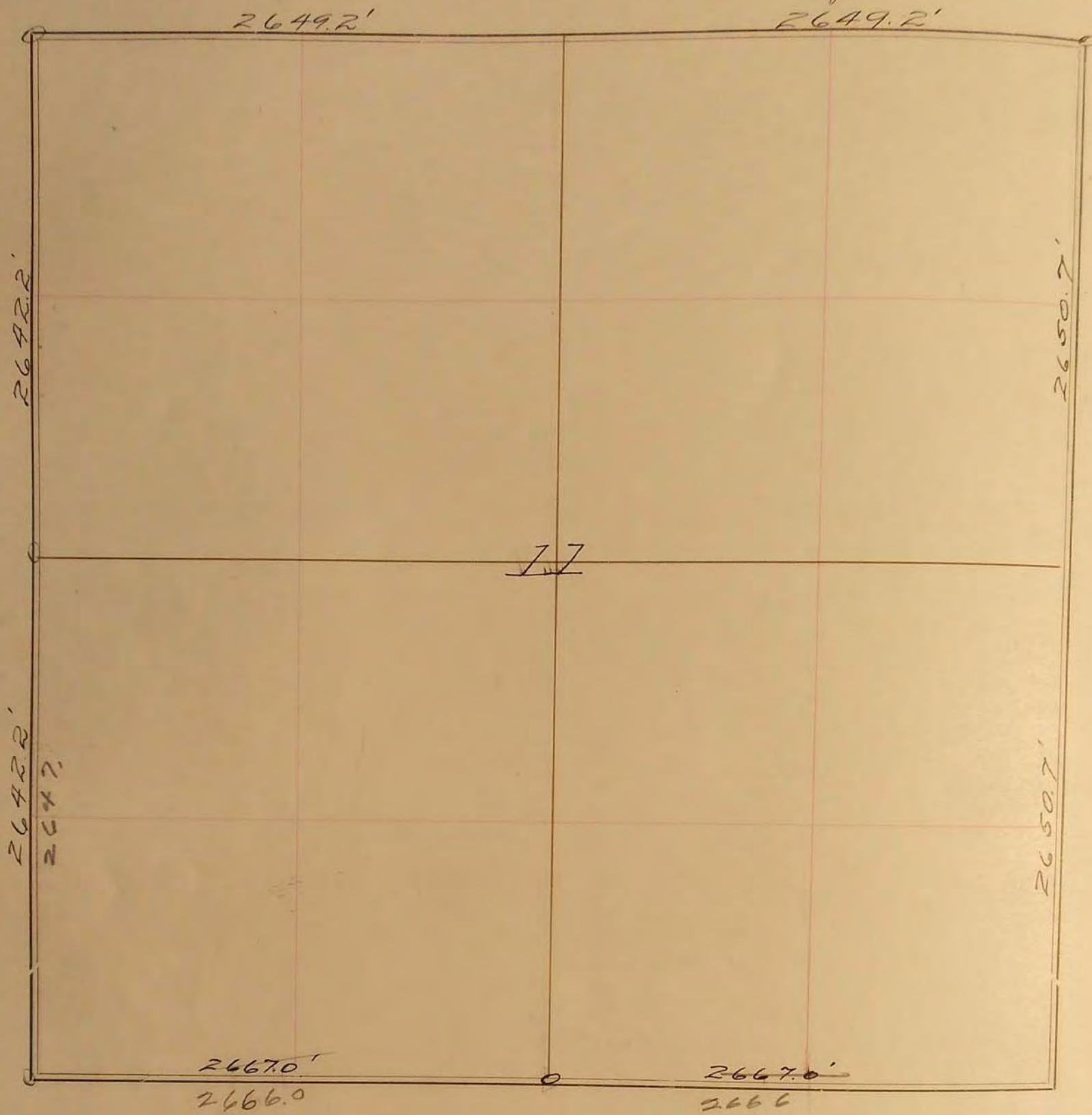


0. Indicates for corners see Page 240
 "E" located 2xc hub surrounded by six 1xc hubs 5' below oil mat surface; 2xc hub was removed and 18" steel rod was replaced at road surface above 2xc hub location: R.P. N&C, corner post West 50.14; R.P. N&C, Brace post SW 50.58 - October 30, 1974
 "D" located field stone 28" below oil mat surface, placed 18" steel pin above stone at surface of road: R.P. N&C, corner post NE 59.30; R.P. N&C, Brace post E-NE 68.10; R.P. Yield sign post SW 60.98 - Oct 30, 1974

- 10
- 11
- 12
- 13
- 14
- 15
- 16
- 17
- 18
- 19
- 20
- 21
- 22
- 23
- 24
- 25
- 26
- 27
- 28
- 29
- 30
- 31
- 32
- 33
- 34
- 35

SURVEY No. _____

Section 11 Town 108 Range 39



FIELD NOTES.

o Indicates Port corners.

See page 240.